

POSTCARD - FRONT



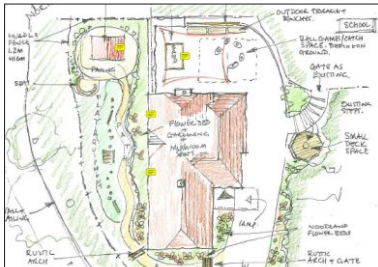
Elderly Care:
Sandford Dementia Garden,
Somerset



Leisure:
Gara Rock Hotel, South Devon



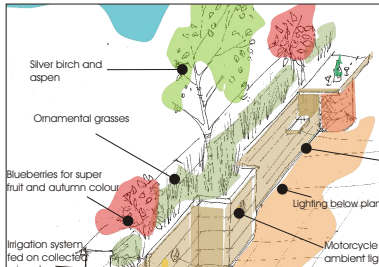
Public Parks:
Gores Marsh Park natural play area,
Bristol



Education:
The Lodge, Bristol Grammar School



Play:
Willmott Park oak climbing wall,
Bristol



Housing:
Douglas Road (roof garden),
Kingswood

afla ltd
Chartered Landscape Architects
www.afla.co.uk

POSTCARD - BACK

2009 has been a very exciting year for AFLA Limited. Our projects have been both interesting and diverse, ranging from elderly care sensory gardens, several Play Pathfinder parks, a new build BREEAM-standard eco primary school and cliff-top hotel landscapes. The schemes have incorporated an exciting variety of design features from toad habitats and aviary to a Troll's bridge and oak climbing wall, all complementing our existing, extensive portfolio.

For more detailed information about any of these schemes and the extensive landscape design service offered by AFLA Limited, please visit our website (www.afla.co.uk) or telephone the Practice Director, Alex Fraser, on 0117 971 3558.

E: info@afla.co.uk
W: www.afla.co.uk
T: 0117 971 3558
A: 20 Cleeve Road, Knowle, Bristol BS4 2JP



2009 has been a very exciting year for AFLA Limited. Our projects have been both interesting and diverse, ranging from elderly care sensory gardens, several Play Pathfinder parks, a new build BREEAM-standard eco primary school and cliff-top hotel landscapes. The schemes have incorporated an exciting variety of design features from toad habitats and aviary to a Troll's bridge and oak climbing wall, all complementing our existing, extensive portfolio.

For more detailed information about any of these schemes and the extensive landscape design service offered by AFLA Limited, please visit our website (www.afla.co.uk) or telephone the Practice Director, Alex Fraser, on 0117 971 3558.

E: info@afla.co.uk
W: www.afla.co.uk
T: 0117 971 3558
A: 20 Cleeve Road, Knowle, Bristol BS4 2JP

