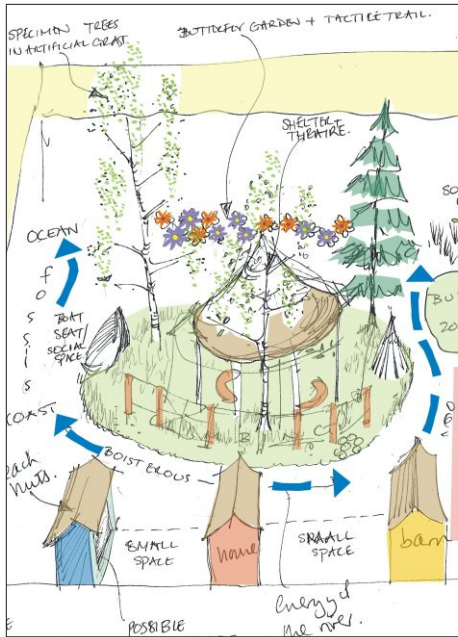
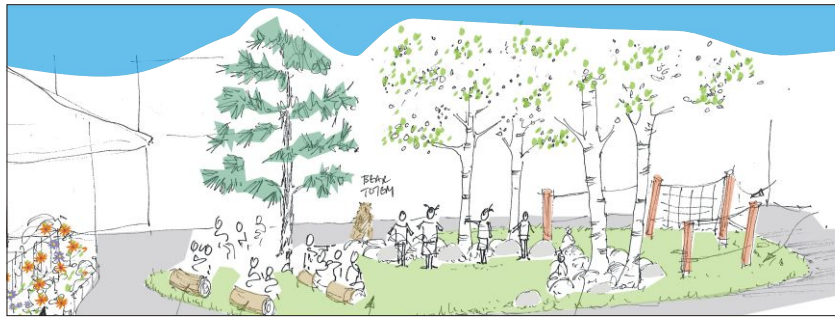


Education Projects - March 2011



Concept sketches: Knowle Park Primary



Outdoor Performance and Play Space: Knowle Park Primary School



Gillingstool & Siblands Primary School



Gillingstool & Siblands Primary School

chartered
landscape
architects
afla

POSTCARD - BACK

We are designing the Foundation Stage playground at Knowle Park Primary School, Bristol. The school has a watery theme to class names and areas. We have taken this concept outside to design a magical playground based on the story of a river running from mountain to ocean and the life cycle of the salmon. The concept brings together a complex brief, which includes the need to provide activities to productively occupy children.

Our design transforms a macadam courtyard with mountain boulders and trees, water play, sand play, a camping area, a butterfly garden, an allotment garden, climbing equipment to develop upper body strength, a sensory shed (with ocean sounds and lights) and tactile surfaces.

In 2009, AFLA Ltd was appointed to develop a robust, easily maintained landscape for Gillingstool & Siblands Primary & SEN Schools, Thornbury. The landscape is now complete, with a nursery garden, shade structures, sand pit, allotment gardens and reflective areas with a woodland walk.

For further information, contact Alex Fraser (Practice Director) on:

- t/f: 0117 971 3558
- e: info@afla.co.uk
- w: www.afla.co.uk
- a: 20 Cleeve Road, Knowle, Bristol BS4 2JP

(March 2011)



**Landscape
Institute**
Registered practice

We are designing the Foundation Stage playground at Knowle Park Primary School, Bristol. The school has a watery theme to class names and areas. We have taken this concept outside to design a magical playground based on the story of a river running from mountain to ocean and the life cycle of the salmon. The concept brings together a complex brief, which includes the need to provide activities to productively occupy children.

Our design transforms a macadam courtyard with mountain boulders and trees, water play, sand play, a camping area, a butterfly garden, an allotment garden, climbing equipment to develop upper body strength, a sensory shed (with ocean sounds and lights) and tactile surfaces.

In 2009, AFLA Ltd was appointed to develop a robust, easily maintained landscape for Gillingstool & Siblands Primary & SEN Schools, Thornbury. The landscape is now complete, with a nursery garden, shade structures, sand pit, allotment gardens and reflective areas with a woodland walk.

For further information, contact Alex Fraser (Practice Director) on:

t/f: 0117 971 3558

e: info@afla.co.uk

w: www.afla.co.uk

a: 20 Cleeve Road, Knowle, Bristol BS4 2JP

(March 2011)

